

# ΔΣΦ Announces . . . The Installation of

ΔΔ at Purdue University

ΔΕ at Missouri School of Mines

ΔΖ at High Point College

## DELTA DELTA First "Hoosier" Chapter

▲ ON Sunday, Feb. 17, 1957, Delta Delta Chapter became the 80th chapter of Delta Sigma Phi International Fraternity. Twenty-eight active and three alumni members were installed at Purdue University, West Lafayette, Ind.

Samuel O. Smith, Jr., International President, presided at the installation ceremony at the chapter house. Mr. Smith was assisted by members of Alpha Alpha Chapter, University of Illinois, Champaign; Alpha Lambda Chapter, James Millikin University, Decatur, Ill.; and Gamma Kappa Chapter, Western Illinois State College, Macomb.

Following the installation ceremony a formal dinner banquet was held at Marshall's Cafeteria with 72 present. John Wildridge, past president of Luma Fraternity, was master of ceremonies. President Samuel O. Smith made the principal address of the afternoon. Frederick L. Hovde, president of Purdue University, presented his congratulations as did the deans of men and women.

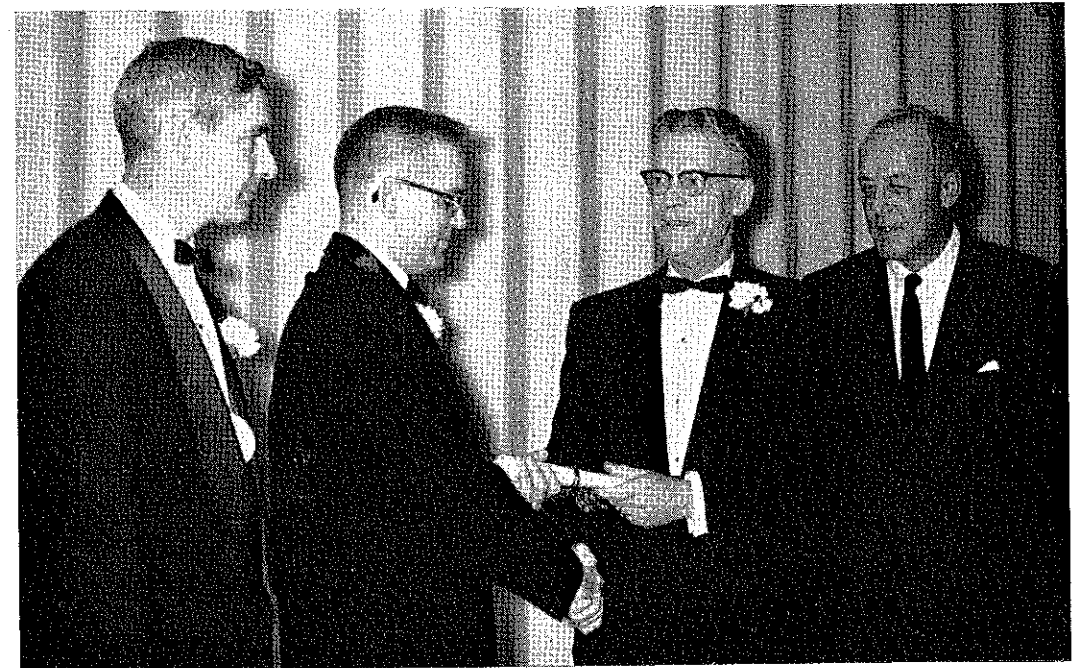
The ceremony that Sunday marked the passing of several milestones in the history

of Luma Fraternity. As Delta Delta Chapter it became the first chapter of Delta Sigma Phi in the state of Indiana and the fifth chapter in the Big Ten.

This group, started in March, 1936, by 12 male students, was the first coöperative house organized on the Purdue campus. Its first name was the University Street Coöp, later changed to the Purdue Student Coöperative Assn. The name Luma was adopted in September, 1937, when all houses were given individual names. Luma signifies coöperation in Swedish.

Moving to Andrew Place in 1945, the house initiated a pledge system to provide a more intensive training program for new members. When house membership had increased from 20 to 50, a comprehensive program to improve the house was originated. In May, 1952, Luma was accepted into the Interfraternity Council, thus changing the internal workings of the organization.

Organized solely as an economic unit to aid male students, Luma, due to the fact



Dr. Samuel N. Postlethwait, faculty advisor, looks on as Richard J. Kuyasa, president of Delta Delta Chapter, accepts the chapter charter from Samuel O. Smith, Jr., International President. Frederick L. Hovde, president of Purdue University, is at the right.

that it was an organized unit, afforded each member a chance to participate more fully in the various athletic, political, and social activities on campus. According to its beliefs, Luma has progressed—slowly but surely. Another step on the ladder toward the goal of a better fraternity took place in 1956, when the present active members announced to alumni their wish to become affiliated with a national fraternal organization.

Delta Delta Chapter, having finished a series of projects on the improvement of their chapter house, are now turning their attentions to campus and social activities.

The members of Delta Delta Chapter wish to extend their thanks and appreciation for the letters and telegrams of congratulations from their many brother chapters in the

United States and Canada.

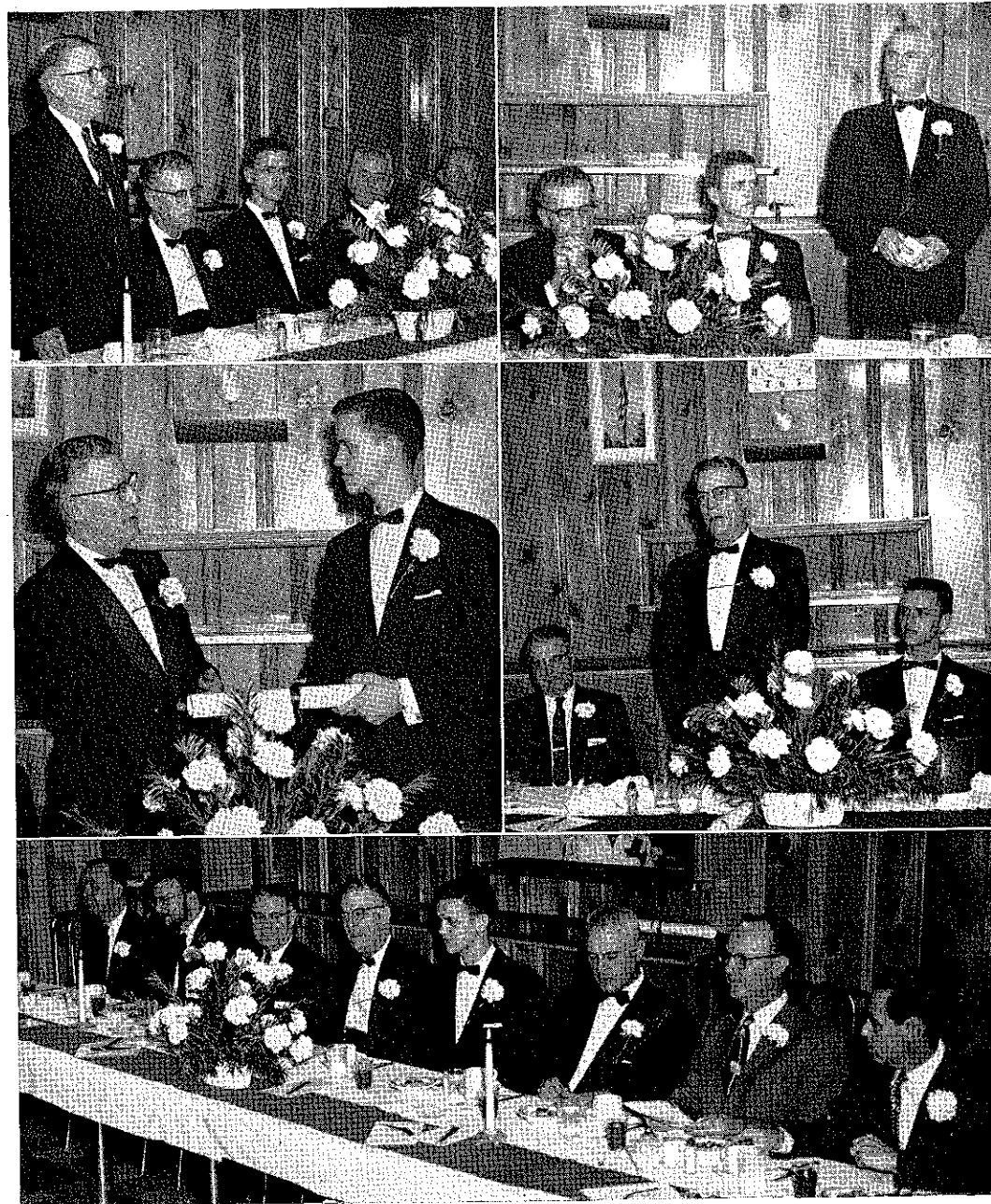
Men initiated into the Brotherhood of Delta Sigma Phi at the Delta Delta Chapter include: Ronald P. Bauerle, Ernest R. Bradley, Larry G. Bruce, Franklin D. Cherry, Jack L. Colbert, Gaylord Cole, Larry D. Creakbaum, Don F. Decker, John E. Doyle, Donald E. Gerlach, Jacob H. Hoffman, Kent L. Humbarger, William Hunt, Donald H. Knoell, Richard J. Kuyasa, Howard I. Mansfield, Leander H. Mehling, Allan M. Nuuja, Oscar E. Salmassy, William R. Smith, Charles Steiner, Marvin D. Stratton, John L. Seufert, Ronald L. Stuckey, William E. Summers, Romayne E. Schroder, Carl H. Takacs, Donald R. Taylor, John W. VanWay, Francis J. Verkamp, Benjamin H. Voliva, John E. Wildridge.

## DELTA EPSILON Fourth Chapter in "Show Me" State

BY DONALD O. NATHAN, *Editor*

▲ ON March 9 and 10, 1957, Delta Epsilon joined the brotherhood of Delta Sigma Phi. Charter President Fred Dietrich served as master of ceremonies at the instal-

lation banquet which was held Sunday afternoon, March 10, 1957. Presiding at the installation were Brother S. O. Smith, President of the International Fraternity, and Brother F. Wacker, Executive Secretary.



AT DELTA EPSILON'S INSTALLATION

Top left: Curtis L. Wilson, dean of the Missouri School of Mines and Metallurgy, addressed the charter membership of Delta Epsilon and their guests. Top right: Francis Wacker, Executive Secretary, reviews the past history of the Delta Epsilon Chapter and expresses hope for its future growth as a campus leader. Center left: The dream of Delta Epsilon's charter membership is realized as Fred Dietrich, president of Delta Epsilon, receives the chapter charter from International President Samuel Smith. Center right: Samuel Smith, International President, challenges Delta Epsilon to strengthen the Brotherhood of Delta Sigma Phi. Bottom: Speakers' table at the Delta Epsilon installation banquet, March 10, 1957, included from left—R. Dietche, A. Macalady, C. Wilson, S. Smith, F. Dietrich, F. Wacker, V. Gevecker, W. Leitner.

Brother Wacker delivered a speech concerning the aims and goals of the international fraternity, and Brother Smith spoke on the future and possibilities of the Delta Epsilon Chapter, and later presented the charter. Guest speakers included Curtis L. Wilson, dean of the Missouri School of Mines, V. A. C. Gevecker, assistant dean of the Missouri School of Mines, and Arthur Macalady, president of the Interfraternity Council. Members of the Control Board present were Capt. Raymond O. Dietsche, president; J. C. Berry, R. V. Schroeter, and R. E. Williams. Also attending the banquet were members of an initiating team from Gamma Eta, Washington University.

The new chapter has already set some precedents on the Missouri School of Mines campus by taking scholarship honors with the highest scholastic average on campus. The colony has also made itself known by a good showing in intramural sports. Delta Sigma Phi men are well known on campus for their participation in nearly all of the extracurricular activities.

From an initial group of four men who met Brother Frank Loyd in February, 1956, the fraternity has grown to over 40 members.

Delta Epsilon of Delta Sigma Phi is now recognized on the Missouri School of Mines campus as a strong and highly competitive fraternity. There are 14 social fraternities on the Missouri School of Mines campus.

The chapter location, about two blocks from campus, has many possibilities for expansion. The house and annex presently accommodates 31 actives and pledges. A large parking lot is also part of the chapter grounds due to parking problems near the campus.

## DELTA ZETA Another "Tar Heel" Chapter

BY BILL DAMON, *Editor*

▲ IN the spring of 1939, the N.D.M. Club was founded on the campus of High Point College with the intention of forming an everlasting fraternal brotherhood. The club was first organized with an emphasis on athletic ability, but as the club grew, the qualifications were extended to include the sincere desire for educational knowledge and a strong fraternal communion.

During the war years, because of the lack

The fraternity recently held its first social activity. The observation of St. Pat's Day has long been a tradition on the Missouri School of Mines campus, and Delta Epsilon was just in time to be a part of the celebrations. The activities began with a parade Friday afternoon, March 15. The theme of the parade was "Important Engineering Feats of All Times." The evening of the parade featured a costume ball, followed the next evening by a formal coronation dance at which the St. Pat's queen was crowned. All of the fraternities on campus held chapter parties with everyone invited, and many guests from other fraternities dropped in to accept some of the Delta Sigma Phi hospitality. The house was beautifully decorated in green and white. These colors not only are the fraternity colors, but also the colors of St. Patrick.

Those initiated during the activities include: Larry C. Bannister, Donald R. Beinart, Gerald W. Hargis, James G. Harvey, Charles K. Hyde, Ralph C. Maxton, Marcellinus A. Orf, Jerome L. Robinson, John J. Schulte, William E. Stevenson, Charles H. Sullivan, and James G. Weimholt.

Chapter officers are: Fred J. Dietrich, president; James E. McNabb, vice president; Earl E. Anspach, secretary; Donald E. Modesitt, treasurer; Arthur E. Kincaid, sergeant at arms; and W. N. Leitner, faculty advisor.

Other members installed at the charter banquet include: Richard A. Acksel, Robert V. Bowles, Clarence Cain, Jr., Albert J. Dusin, William R. Field, John R. Giboney, Dale W. Harris, Carl M. Herrin, Ralph W. McCormick, Donald E. Molhenkamp, Robert E. Miller, and Carol L. Robison.

of men on campus, the club was disbanded. In the fall of 1946, however, the club was reorganized with an even stronger feeling of fraternal brotherhood.

In the fall of 1954 there was a slight movement toward an affiliation with Delta Sigma Phi. There were nine of the N.D.M. brothers who pledged to Delta Sigma Phi and were initiated that fall by Alpha Epsilon Chapter at Duke University. It was not until the fall of 1956, however, after a visit by