

*Petition of*  
DELTA SIGMA PHI  
CLUB

**P E T I T I O N**  
**of**  
**DELTA SIGMA PHI CLUB**  
**at**  
**MISSOURI SCHOOL OF MINES AND METALLURGY**  
**ROLLA**  
**MISSOURI**  
**to**  
**THE DELTA SIGMA PHI FRATERNITY**

**December, 1956**

## Table of Contents

Formal Petition .....	3
Proposed Members .....	4
History of the School .....	4
National Social Fraternities .....	4
National Honorary Fraternities .....	4
Purpose of the School .....	4
Three Closest Accredited Colleges .....	4
Enrollment .....	4
Colleges Our Football Team Plays .....	5
History of Delta Sigma Phi Club .....	5
Letters of Recommendation .....	6
Positions Held on Campus .....	7
War Service .....	7
Alumni Members .....	7
Chapter Officers and Committee Chairmen .....	7
Personal Histories .....	8

## Pictures

Proposed Fraternity Building .....	5
Map of Campus .....	9
Map of Rolla .....	10
Metallurgical Building .....	11
Norwood Hall .....	12

## Formal Petition

December 3, 1956

Mr. Francis Wacker, Executive Secretary  
Delta Sigma Phi Fraternity  
1445 Steel St.  
Denver 6, Colorado

Dear Sir:

We, the undersigned duly elected officers of the Delta Sigma Phi Club, whose signatures appear herein below, do hereby certify that the following resolution was regularly and duly passed at a meeting of our organization held on the third day of December in the year of our Lord nineteen hundred and fifty-six, to wit:

WHEREAS, This organization, known and recognized as the Delta Sigma Phi Club on the campus of Missouri School of Mines and Metallurgy located at Rolla, Missouri, is desirous of becoming a Chapter of the Delta Sigma Phi Fraternity, an international college social fraternity.

IT IS HEREBY RESOLVED, that the proper officers of this organization, be and they are hereby authorized, empowered and directed to draw up and present to the proper authorities of the Delta Sigma Phi Fraternity, a formal petition for national recognition as a duly established Chapter of said Fraternity, subject and privileged to all its laws, rules, regulations and traditions common to the fraternity as a whole.

FURTHERMORE BE IT RESOLVED, that the officers of this organization, be and they are hereby authorized, empowered and directed to take such steps and make such expenditures for and in behalf of this organization, as may be required by the Delta Sigma Phi Fraternity, in order to acquire such recognition and authority as expressed herein above;

FURTHERMORE BE IT RESOLVED, that we individually and collectively, hereby pledge our loyalty, honor and utmost endeavors to the furtherance of the aims and ideals of the DELTA SIGMA PHI FRATERNITY, as evidence of our faith and sincere intentions.

IN WITNESS WHEREOF, we hereby affix our hands and signatures.

DELTA SIGMA PHI CLUB  
(signed) Wm. R. FIELD, President  
(signed) A. J. DUSIN JR., Secretary

## P E T I T I O N to The Delta Sigma Phi Fraternity

We, the members of the Delta Sigma Phi Club of the Missouri School of Mines and Metallurgy located at Rolla, Missouri, do hereby petition

THE DELTA SIGMA PHI FRATERNITY to become active members of said national fraternity, and furthermore request authority to establish a Chapter thereof on this campus, subject to all rules, laws, regulations, privileges and traditions common to the Fraternity.

We do therefore, individually and collectively pledge our loyalty, honor and utmost endeavors to the furtherance of the aims and ideals of The Delta Sigma Phi Fraternity, if granted this honor and privilege.

Submitted herewith is factual information concerning our college, our campus and our organization.

Respectfully submitted,  
DELTA SIGMA PHI CLUB  
(signed) Wm. R. FIELD, President  
(signed) A. J. DUSIN JR., Secretary

## Proposed Members

### SENIORS:

Dietrich, Fred

### JUNIORS:

Anspach, Earl E.  
 Dusin, Albert J.  
 Field, William R.  
 Giboney, John R.  
 Harris, Dale W.  
 Herren, Carl M.  
 McCormick, Ralph W.  
 McNabb, James E.  
 Modesitt, Donald E.  
 Schulte, John J.  
 Sullivan, Charles H.  
 Weimholt, James E.

### SOPHOMORES:

Acksel, Richard A.  
 Bowles, Robert V.  
 Cain, Clarence  
 Kincaid, Arthur E.  
 Lehr, Jack R.  
 Miller, Robert E.  
 Robison, Carol L.

### FRESHMEN:

Stanley, Charles  
 Walz, Donald  
 Wogtech, Arthur H.

## History of the Missouri School of Mines and Metallurgy

The University of Missouri was established by an act of the General Assembly of the State of Missouri, approved February 11, 1839, two days after the act of establishing the public school system of the State was approved.

The University was located at Columbia, Boone County, June 24, 1839. The cornerstone of the main building was laid July 4, 1840. Instruction in academic courses was begun April 14, 1841. The first class, consisting of two members, was graduated in 1843. Women were first admitted to the University in 1869.

In 1870, the General Assembly of Missouri in accepting the donation of land for educational purposes made by the United States Government through an Act of Congress, approved July 2, 1862, established an Agricultural College at Columbia, and a School of Mines and Metallurgy in Southeast Missouri.

The School of Mines and Metallurgy was located at Rolla, Phelps County. Here, in November, 1871, the school was formally opened. The first class of three members was graduated in 1874.

The first National Social Fraternity on the Campus of Missouri School of Mines and Metallurgy was the Gamma Xi Chapter of Sigma Nu. It was started on January 2, 1903.

## National Social Fraternities on Campus

Beta Sigma Psi .....	Chapter House
Kappa Alpha .....	Chapter House
Kappa Sigma .....	Chapter House
Lambda Chi Alpha .....	Chapter House
Pi Kappa Alpha .....	Chapter House
Sigma Nu .....	Chapter House
Sigma Phi Epsilon .....	Chapter House
Sigma Pi .....	Chapter House
Sigma Tau Gamma .....	Chapter House
Tau Kappa Epsilon .....	Chapter House
Theta Kappa Phi .....	Chapter House
Theta Xi .....	Chapter House
Triangle .....	Chapter House

## National Honorary Fraternities on Campus

Alpha Chi Sigma .....	Chemistry
Alpha Phi Omega .....	National Service Fraternity
Blue Key .....	National Service Organization
Chi Epsilon .....	Civil
Eta Kappa Nu .....	Electrical
Keramos .....	Ceramics
Pi Tau Sigma .....	Mechanical
Phi Kappa Phi .....	Scholarship
Sigma Gamma Epsilon .....	Earth Sciences
Sigma Pi Sigma .....	Physics
Sigma Xi .....	Scholarship
Tau Beta Pi .....	Scholarship
Theta Tau .....	Professional Engineering Fraternity

## Purpose of the College

This college is devoted to the preparation of engineers and scientists for the professional world, and therefore has only engineering and science curricula:

- Ceramic Engineering
- Chemical Engineering
  - a. Chemical Engineering
  - b. Petroleum Engineering
- Civil Engineering
- Electrical Engineering
- Metallurgical Engineering
  - a. Metallurgical Engineering
  - b. Nuclear Engineering Option
- Mining Engineering
  - a. Mining Engineering
  - b. Petroleum Engineering
- Science, Chemistry Major
- Science, Geology Major
- Science, Physics Major

Each student is prepared for one particular phase of engineering.

The degrees given by this institution are Bachelor of Science, and Master of Science. A Professional Degree may also be conferred.

## Three Closest Accredited Colleges

- St. Louis University, founded in 1818.
- University of Missouri, founded in 1839.
- Washington University, founded in 1853.

## Enrollment

Number of male students attending this college,	2387.
Number of female students attending this college,	17.
Number of men in all Social Fraternities on campus:	
Beta Sigma Psi .....	29
Kappa Alpha .....	62
Kappa Sigma .....	64
Lambda Chi Alpha .....	76
Pi Kappa Alpha .....	66
Sigma Nu .....	69
Sigma Phi Epsilon .....	59
Sigma Pi .....	39
Sigma Tau Gamma .....	30
Tau Kappa Epsilon .....	56
Theta Kappa Phi .....	64
Theta Xi .....	46
Triangle .....	51
Total .....	711

## Colleges Our Football Team Plays

- Kansas State Teachers
- Carthage College
- Washington University
- Southwestern Tennessee
- Northeast Missouri State
- Southwest Missouri State
- Northwest Missouri State
- Central Missouri State
- Southeast Missouri State

Our biggest rival is Washington University.

## History of Delta Sigma Phi Club

The Delta Sigma Phi fraternity here at the Missouri School of Mines in Rolla, Mo. began organizing in early March of 1956. It began with meeting held by Frank Lloyd, a representative from National Headquarters, who spoke on the advantages of the fraternity. After a few meetings with Mr. Lloyd our future meetings were held under the supervision of Ralph McCormick, who was nominated temporary president.

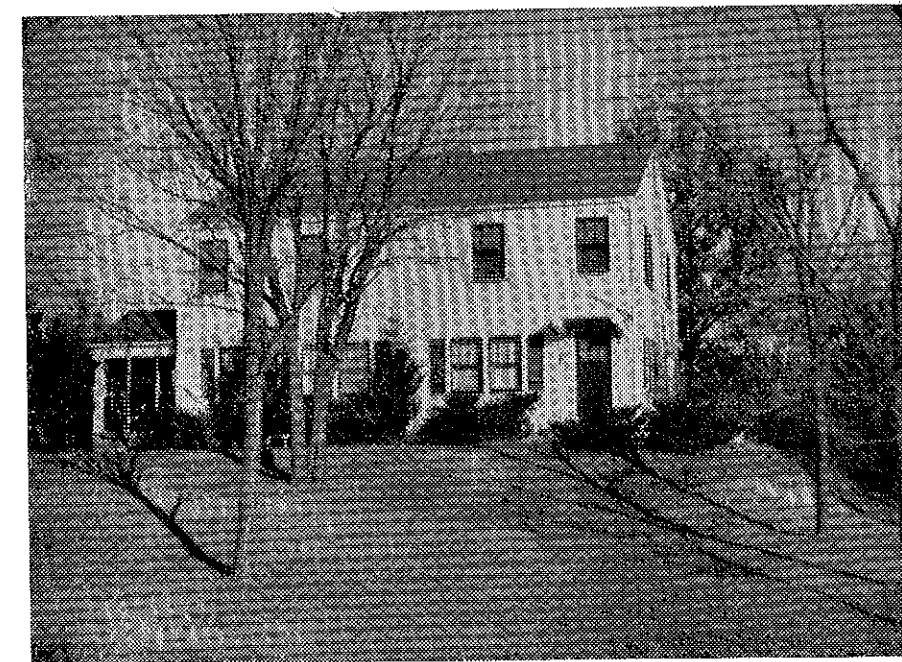
Our meetings were held weekly, and new members

were pledged. Upon receiving a large number of pledges through personal contact, our first main election was held on April 30, 1956. Ralph McCormick was elected president. This election brought the group closer together. The meetings were continued weekly and new members were introduced.

On May 26th and 27th of 1956, a group from the chapters of St. Louis and Washington Universities, of St. Louis, came to Rolla, Mo. to hold an initiation for the pledges who were eligible. This initiation being our first, produced our first active members here on the campus of the Missouri School of Mines. Our active members held their first initiation on October 6th and 7th of 1956 and the presence of the new active members were welcomed to the fraternity.

Due to certain school standards, which our president at that time could not fulfill, a special election was held on October 1, 1956, to elect a new president. The result of this election put Bill Field in as president of the fraternity. Our group is increasing and becoming a very sound group. We do not, as yet, have the possession of a house because of the housing scarcity here in Rolla, but we have been making much progress in that direction with the future looking very promising.

## The Delta Sig House — Just Purchased



AS OF PUBLICATION DATE OF THIS FORMAL PETITION, we are happy to report that negotiations for the purchase of the new fraternity house, located at 200 W. 18th (two blocks from the campus) have been completed. Occupancy of the house will commence Spring Semester of 1957.

We are also gratified to report that the membership of the organization has now reached 40.

## LETTERS OF RECOMMENDATION

### Dean of the College

October 9, 1956

President  
Delta Sigma Phi  
Dear Sir:

The Colony of Delta Sigma Phi on the campus of Missouri School of Mines and Metallurgy in Rolla, Missouri has already established itself as the nucleus of an outstanding social fraternity. The members of this Colony have shown themselves to be good students, good citizens and young gentlemen of the type which is so desirable on the campus of any American college.

The enrollment of Missouri School of Mines and Metallurgy has doubled in the last three years from a total of 1191 in the fall of 1953 to 2404 in the fall of 1956. As this is an engineering college the student body is predominantly male. There are at present thirteen National Social Fraternities on this campus with their own houses. With such a large enrollment and with prospects for continuing increases in enrollment another National Social Fraternity with its own house is not only highly desirable but urgently needed.

Faculty members particularly interested in the social development of the students are gratified that this Colony is presenting its petition to Delta Sigma Phi. I take pleasure in recommending this Colony to Delta Sigma Phi and pledge the cooperation of the administration of this college in assisting these students and in promoting the worthy objectives of Delta Sigma Phi.

(signed) CURTIS L. WILSON  
Dean

### Assistant Dean of the College

October 12, 1956

Gentlemen:

I am very happy to recommend the establishment of a chapter of The Delta Sigma Phi Fraternity on this campus. This chapter would be a valuable addition to the thirteen national fraternities already existent at this school. At least three of these chapter have already celebrated their fiftieth anniversary. The members of your colony, filed in this office, are all good upright outstanding students representative of our student body. I have observed their progress during this formative period and commend the caution with which they have proceeded.

This school welcomes the addition of The Delta Sigma Phi Fraternity in its midst. We are always interested in the addition of good strong national organizations on our campus. It is of interest to note that in our 2400 students presently enrolled thirty per cent of these men are members of national social fraternities. This is a record of which this school can be proud because these fraternities feed and house a good portion of the student body without expense to the school or to the taxpayers of this state.

As a graduate of this school, as a fraternity man, and as an administrator of this institution I believe a future of a chapter of The Delta Sigma Phi Fraternity on this campus will be good. I believe that chapter will contribute to the growth of the school and to our well-being. I invite your fraternity to establish itself upon this campus.

Sincerely yours,  
(signed) V. A. C. GEVECKER  
Assistant Dean

### Sigma Nu

October 17, 1956

Dear Sirs,

As the oldest fraternity on the Missouri School of Mines and Metallurgy campus, Sigma Nu has closely watched the formation of this organization that desires to be chartered as a chapter of Delta Sigma Phi.

The formation of a new fraternity is looked upon with approval by all fraternities on the campus. We realize that this will be another step forward in the strengthening of our fraternity system here. As for Sigma Nu, we would welcome Delta Sigma Phi to our campus.

Sincerely yours,  
(signed) EDWIN D. REID  
Commander  
Sigma Nu Fraternity  
Gamma Xi Chapter

### Pi Kappa Alpha

October 26, 1956

Gentlemen:

We of the Alpha Kappa Chapter of Pi Kappa Alpha would like to recommend the installation of Delta Sigma Phi. As we have only thirteen fraternities on our campus, we think that a chapter of Delta Sigma Phi would strengthen our system. The men who are organizing Delta Sigma Phi are men of outstanding character and are recognized as campus leaders; therefore, we feel that the forming of this chapter would be a wise move.

(signed) JAMES J. WEAKLY  
President—Alpha Kappa

### Beta Sigma Psi

Dear Sir:

It has been brought to my attention that a part of the student body of Missouri School of Mines and Metallurgy are contemplating the installation of a chapter of Delta Sigma Phi here on our campus in Rolla.

I deem this installation a very advantageous one in every and all respects. This semester the enrollment of MSM doubled and by all indications, this trend in a larger student body shall continue into the future. The existing fraternities play an extremely important and integral part in the student's life here at school. Because of this fact, and because of the increased enrollment, I deem it an actual necessity and I see a concrete need for such an installation to be made.

These aforementioned students are well organized and have petitioned the Faculty and Student Council for entrance as another fraternity in our midst. Their petitions have been accepted. They are entering intramural sports, participating in other fraternal matters, and are putting forth a concentrated effort in securing housing accommodations. Consequently as President of Beta Sigma Psi, they have my full recommendation and best wishes for this affiliation with us. I'm quite certain that their annexation to the present group of fraternities will be a tremendous asset and credit, not only to us, but to the entire fraternity system.

Sincerely yours,  
(signed) J. H. WEBER  
President,  
Eta of Beta Sigma Psi

### Tau Kappa Epsilon

October 18, 1956

Dear Sir:

The campus at Missouri School of Mines should be an excellent choice for Delta Sigma Phi to install a new chapter. During the past three years there has been better than a 100% increase in enrollment with no additional fraternities. Since the student body is made up almost entirely of men, the 13 fraternities now on campus have only a minority of the 2400 students enrolled.

With the continued demand for engineers, the enrollment here is most likely to stay on the increase, which would be a healthy situation for a new chapter. We believe that the extending of a charter here would be good for Delta Sigma Phi and for the campus.

Yours truly,  
(signed) JOHN R. ANDERSON  
President,  
Tau Kappa Epsilon

### Theta Xi

Gentlemen:

The Alpha Psi chapter of the Theta Xi fraternity recommends for your consideration the Delta Sigma Phi Colony here at Missouri School of Mines.

We feel that the Delta Sigma Phi Colony has shown a great deal of consideration and discernment in their choice of members, several of whom are now prominent leaders on the campus. The Delta Sigma Phi Colony is a well organized group and is well liked by the men on the campus. They have petitioned the faculty and school and are now in the process of securing a house and entering the intramural program here at the school. The increase in enrollment here at MSM has definitely disclosed the need for another fraternity.

In view of these facts the Alpha Psi chapter of the Theta Xi Fraternity believes that the Colony of Delta Sigma Phi would be an asset to a national fraternity organization.

Sincerely,  
Alpha Psi Chapter  
Theta Xi Fraternity  
(signed) JOSEPH MICKES  
President

### Triangle

October 16, 1956

Dear Sir:

It has been brought to our attention that a letter of recommendation is needed as part of the procedure of obtaining a charter for the proposed Missouri Mines Chapter of Delta Sigma Phi.

In their short time of existence, we have found it a pleasure to be associated with such an active group of men and we, Triangle Fraternity, whole-heartedly recommend them for membership in your organization.

Needless to say, with the high increase in enrollment, Missouri Mines is in dire need of more and better fraternities, and we sincerely hope that you accept these men as one of you.

Yours truly,  
(signed) DENNIS R. HUNNICUTT,  
President,  
Missouri Mines Chapter  
Triangle Fraternity

### Honorary Societies and Positions Held on Campus

Dietrich, Fred: Bridge Correspondent, Eta Kappa Nu (national honorary electrical fraternity); Tau Beta Pi; Blue Key; Glee Club, President.

Field, William R.: Eta Kappa Nu (national honorary electrical fraternity); Tau Beta Pi (national scholarship fraternity).

Harris, Dale W.: Treasurer, Alpha Chi Sigma (national honorary chemical fraternity); Secretary, MSM Glee Club.

Modesitt, Donald E.: Chi Epsilon (national honorary civil fraternity); MSM Glee Club.

McNabb, James E.: Eta Kappa Nu (national honorary electrical fraternity).

### War Service

Acksel, Richard A.; two years, U. S. Army.  
Anspach, Earl E.; three years, U. S. Coast Guard.  
Bowles, Robert V.; four years, U. S. Air Force.  
Cain, Clarence; two years, U. S. Army.  
Dusin, Albert J.; three years, U. S. Coast Guard.  
Field, William R.; four years U. S. Air Force.  
Giboney, John R.; four years, U. S. Air Force.  
Herren, Carl M.; four years, U. S. Navy.  
Kincaid, Arthur E.; two years, U. S. Army.  
Lehr, Jack R.; two years, U. S. Army.  
McNabb, James E.; four years, U. S. Navy.  
Miller, Robert E.; two years, U. S. Navy.  
Schulte, John J.; four years, U. S. Navy.  
Weimholt, James E.; four years, U. S. Navy.  
Wogtech, Arthur H.; two years, U. S. Air Force.

### Chapter Officers and Committee Chairmen

President ..... William R. Field  
Vice-President ..... Carol L. Robison  
Treasurer ..... Donald E. Modesitt  
Secretary ..... Albert J. Dusin Jr.  
Historian ..... Richard A. Acksel  
Chaplain ..... Robert W. McCormick  
Sergeant-at-arms ..... Arthur E. Kincaid  
Pledging Committee Chairman ..... Frederick Dietrich  
Editor ..... Earl E. Anspach  
Pledge Master ..... Dale W. Harris

### Alumni Members

Faculty Adviser ..... Wells N. Leitner  
Control Board ..... Raymond O. Dietsche, President  
Roy E. Williams  
J. C. Alexander  
J. K. Moody  
R. Schroeter  
O. L. Moutray  
O. G. Berry

## PERSONAL HISTORIES

Name	Hometown	Age	Marital Status	Major	Religion	Class
Acksel, Richard A.	St. Louis, Mo.	23	Single	Mechanical	Lutheran	Sophomore
Anspach, Earl E.	Poplar Bluff, Mo.	23	Married	Electrical	Christian	Junior
Bowles, Robert V.	Marshall, Mo.	25	Single	Mining	Catholic	Sophomore
Cain, Clarence, Jr.	Eldon, Mo.	24	Single	Civil	Methodist	Sophomore
Dietrich, Frederick	Normandy, Mo.	19	Single	Electrical	Catholic	Senior
Dusin, Albert J., Jr.	Hannibal, Mo.	24	Single	Electrical	Catholic	Junior
Field, William R.	St. James, Mo.	27	Married	Electrical	Christian	Junior
Giboney, John R.	Springfield, Mo.	25	Married	Electrical	Methodist	Junior
Harris, Dale W.	Hannibal, Mo.	20	Single	Chemical	Methodist	Junior
Herren, Carl M.	Marshfield, Mo.	23	Single	Electrical	Methodist	Junior
Hyde, Charles K.	Marshfield, Mo.	19	Single	Electrical	Baptist	Sophomore
Kincaid, Arthur E.	St. Louis, Mo.	23	Single	Mechanical	Unitarian	Sophomore
Lehr, Jack R.	Maplewood, Mo.	26	Married	Mechanical	Evangelical	Sophomore
McCormick, Ralph W.	Chillicothe, Mo.	19	Single	Mechanical	Baptist	Junior
McNabb, James E.	Marshfield, Mo.	24	Single	Electrical	Christian	Junior
Modesitt, Donald E.	Hannibal, Mo.	19	Single	Civil	Christian	Junior
Miller, Robert E.	Granite City, Ill.	22	Single	Mechanical	Evangelical & Reform	Sophomore
Robison, Carol L.	Macon, Mo.	18	Single	Civil	Baptist	Sophomore
Schulte, John J.	Jennings, Mo.	25	Single	Electrical	Catholic	Junior
Stanley, Charles A.	Beloit, Wis.	18	Single	Mechanical	Catholic	Freshman
Sullivan, Charles	Hannibal, Mo.	19	Single	Civil	Christian	Junior
Walz, Donald	E. St. Louis, Ill.	20	Single	Mechanical	Evangelical & Reform	Freshman
Weimholt, James E.	Sedalia, Mo.	25	Single	Electrical	Catholic	Junior
Wogtech, Arthur H.	St. Louis, Mo.	26	Married	Civil	Evangelical & Reform	Freshman

